

CWC 604 MACHINE BOND

A Deep-Pour Epoxy Grout

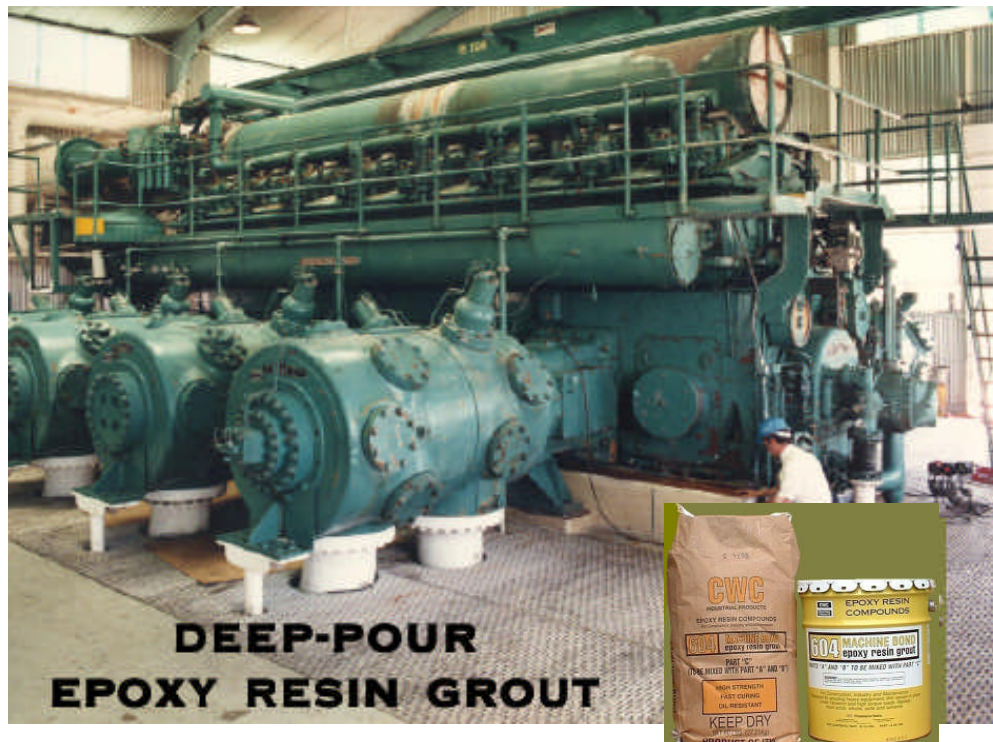
Technical Bulletin # 1104D

Material Description

CWC 604 Machine Bond is a three-component, 100% solids epoxy resin grout formulated for the installation of heavy machinery, pumps, compressors, engines/prime drivers and other production / processing equipment. CWC 604 Machine Bond is designed to provide permanent vertical support where maintaining precision alignment is critical. CWC 604 Machine Bond also aids in the uniform transfer of static and dynamic loads to the concrete foundation and pad.

CWC 604 Machine Bond protects expensive capital investments: Uniform transfer of static and dynamic loads to these monolithic vibration-damping foundation systems assures permanent, maintenance-free alignment of all types of rotary and reciprocating machinery.

CWC 604 Machine Bond is formulated with specialty epoxy resins and a select blend of aggregates to provide the best balance of chemical and physical properties. Low exotherm, easy flow and self-leveling characteristics facilitate efficient placement for a top-quality grouting job — from start to finish.



Use & Benefits

CWC 604 Machine Bond provides faster, more convenient machinery installations — and keeps machinery on-line to • extend mean running time between scheduled shutdowns • protect capital investments • reduce overall maintenance costs. CWC 604 Machine Bond resists chemical attack and effectively damps static and dynamic stresses exerted on the monolithic foundation systems of rotary and reciprocating machinery.

This flowable, self-leveling grout can be used for deep monolithic pours (18' plus). In addition to excellent physical and mechanical properties, this 100% solids deep-pour grout provides a low exotherm and an extended placement time. Easy clean-up with water.

ITW POLYMER TECHNOLOGIES

130 Commerce Drive • Montgomeryville, PA 18936 • 215-855-8450 • Fax 215-855-4688



ITW Philadelphia Division
Registered to ISO 9001:2000
File No. A3750



ITW Performance Polymer Europe
ISO 9001:2000
Q18-09

Application Instructions

For Surface Preparation, Forming, Mixing and Placing, Proper Tools, Supplies and Accessories, and Safety Precautions — refer to instructions provided with material. Store the epoxy and aggregate in a dry location at 55°F to 95°F. Condition the foundation and equipment to 75°F to 90°F prior to mixing and pouring See Technical Bulletin # 1105 for detailed information on installing CWC 604.

Physical Properties

COMPRESSIVE STRENGTH:	16,100 psi	
COMPRESSIVE MODULUS OF ELASTICITY:	3.8 x 10 ⁶ psi	
LINEAR SHRINKAGE:		
COEFFICIENT OF LINEAR THERMAL EXPANSION:	16 x 10 ⁻⁶ in/in/°F (28.8 x 10 ⁻⁶ mm/mm/°C)	ASTM D696
FLEXURAL STRENGTH:	7,880 psi	
FLEXURAL MODULUS OF ELASTICITY:	2.0 x 10 ⁶ psi	
TENSILE STRENGTH:	3,065 psi	
TENSILE MODULUS OF ELASTICITY:	3.4 x 10 ⁶ psi	ASTM D638
SHEAR STRENGTH:	3,910 psi	ASTM D732
BOND STRENGTH:	2,520 psi	ASTM 0882
FIRE RESISTANCE:	Self Extinguishing	
SPECIFIC GRAVITY:	1.89	
HARDNESS, SHORE D:	93	ASTM D2240

Product Information

UNIT COVERAGE:	1.7 ft ³ (48 L)
APPLICATION TEMPERATURE:	55°F (13°C) to 95°F (35°C)
PACKAGING per Unit:	Resin – 11.9 kg (26.2 lbs.), 10 L (2.64 gal) in a 5 gal can. Hardener– 6.5 kg (14.3 lbs.), 6.8 L (1.8 gal) in a Tray on Top of the Resin. Aggregate – Four (4) 60 lb. (27.2 kg) bags Shipping Weight: 284 lbs (126 kg)
CURE TIME (approximate):	60 hours @ 15°C (60°F) 45 hours @ 18°C (65°F) 45 hours @ 21°C (70°F) 35 hours @ 26°C (80°F)
POT LIFE:	3.5 hours @ 21°C (70°F)
SHELF LIFE:	1 year
CLEAN UP:	Water & PRT-59 or similar epoxy solvent

Date 08/2005

General: Every reasonable effort is made to insure the technical information and recommendations on these data pages are true and accurate to the best of our knowledge at the date of issuance. However, this information is subject to change without notice. Prior versions of this publication are invalid with the release of this version. Products and information are intended for use by qualified applicators that have the required background, technical knowledge, and equipment to perform said tasks in a satisfactory manner. Consult your local distributor for product availability, additional product information, and technical support.

Warranty: ITW Philadelphia Resins, a division of Illinois Tool Works Inc., warrants that its products meet their printed specifications. This is the sole warranty. This warranty expires one year after product shipment.

Warranty Claims: If any product fails to meet the above, ITW Philadelphia Resins will, at its option, either replace the product or refund the purchase price. ITW Philadelphia Resins will have no other liability for breach of warranty, negligence, or otherwise. All warranty claims must be made in writing within one year of the date of shipment. No other claims will be considered.

Disclaimer: ITW Philadelphia Resins makes no other warranty, expressed or implied, and specifically disclaims any warranty of merchantability or fitness for a particular purpose.

Suggestions concerning the use of products are not warranties. The purchaser assumes the responsibility for determining suitability of products and appropriate use. ITW Philadelphia Resins' sole liability, for breach of warranty, negligence or otherwise, shall be the replacement of product or refund of the purchase price, at ITW Philadelphia Resins' election. Under no circumstances shall ITW Philadelphia Resins be liable for any indirect, incidental or consequential damages.

Modification of Warranty: No distributor or sales representative has the authority to change the above provisions. No change in the above provisions will be valid unless in writing and signed by an officer or the Technical Director of ITW Philadelphia Resins. No term of any purchase order shall serve to modify any provision of this document.

Mediation and Arbitration: If any dispute arises relating to products or product warranties, either the purchaser or ITW Philadelphia Resins may a) initiate mediation under the then current Center for Public Resources (CPR) Model Procedure for Mediation of Business Disputes, or b) initiate a non-binding arbitration under the rules of the American Arbitration Association for the resolution of commercial disputes.